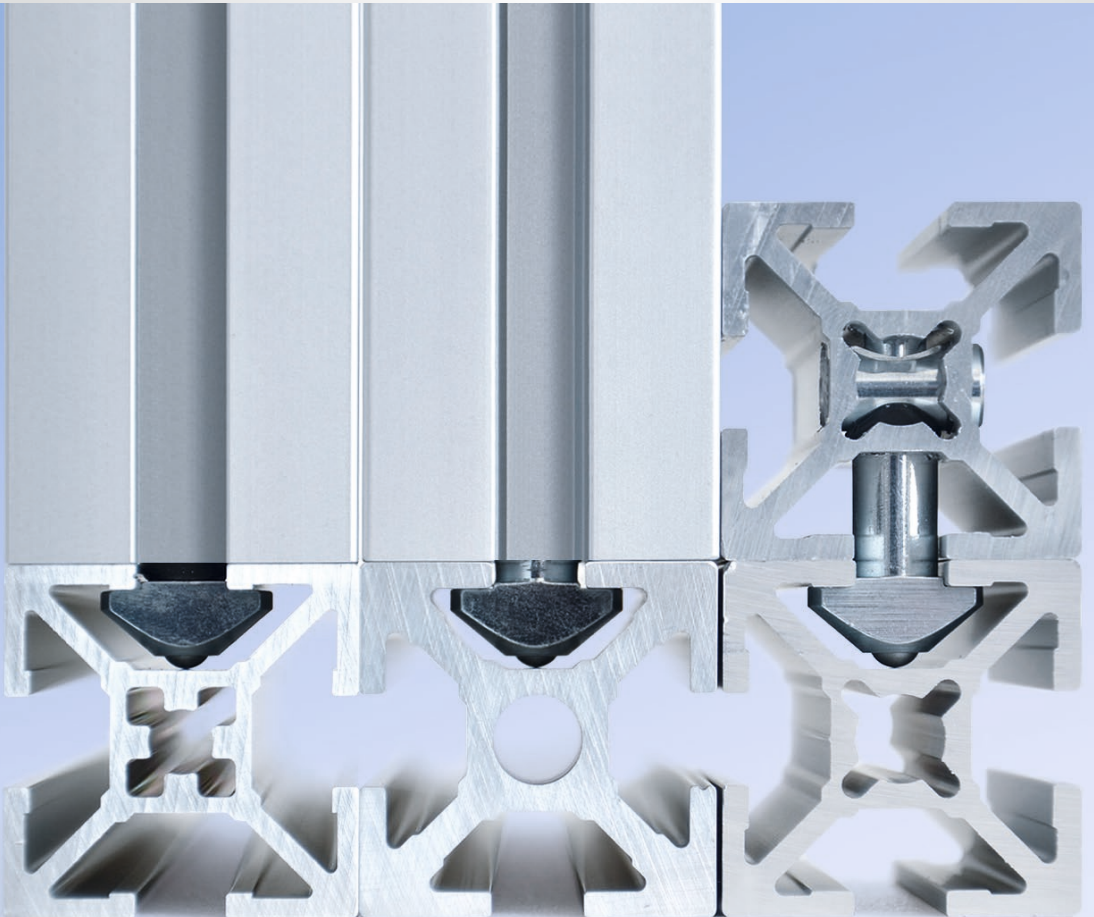




# New compact mk Tension Plug



*Attractive design - accessible grooves - no sliding*

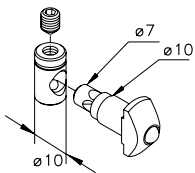
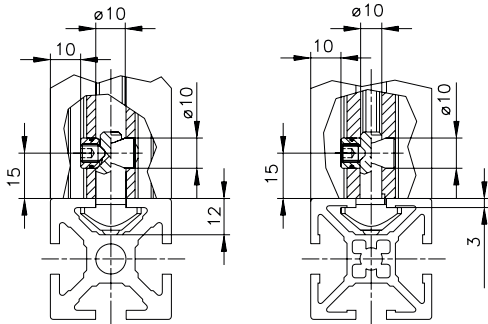


# Assembly Components

## Internal Fasteners

### Tension Plug with pressure piece series 40

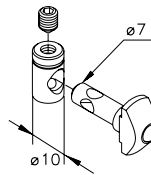
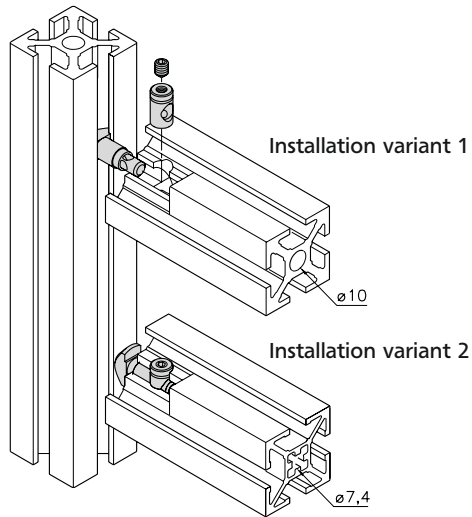
The tension plug with pressure piece is especially suitable for frame constructions with plane elements, since all grooves remain accessible. Furthermore, tension plugs can be used to mount profiles retroactively, even if the front surface of the profile is already closed. The pressure piece (ball with spring) locks the tension plug in the groove, which makes the vertical installation very easy and provides another option for the installation.



Tension Plug series 40\*  
(normal+light)  
**B51.03.040**  
Steel Zn

\*replaces B51.03.036 in the future

for end services BV, BW  
(Drill  $\varnothing$  10 mm through hole, 15 mm from end)



Tension Plug series 40\*  
(extra light)  
**B51.03.041**  
Steel Zn

\*replaces B51.03.037 in the future

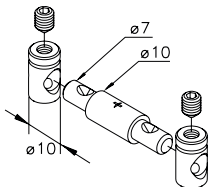
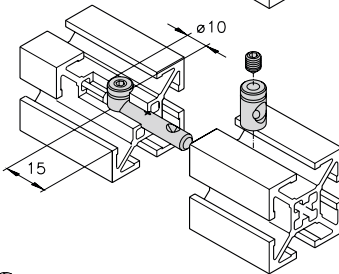
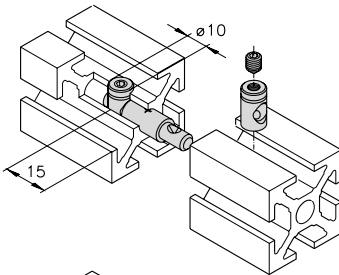
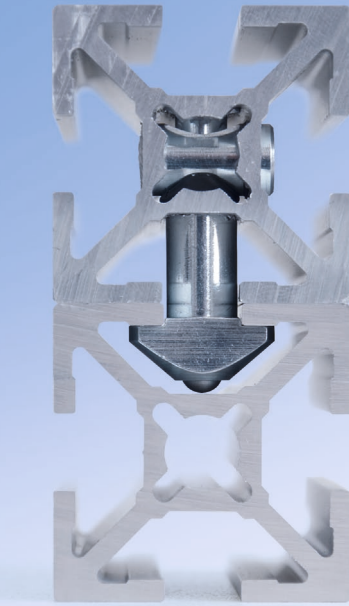
for end services BV, BW  
(Drill  $\varnothing$  10 mm through hole, 15 mm from end)

*Internal Fasteners*

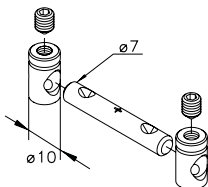
## Parallel and butt tension plugs series 40

Parallel and butt tension plugs provide the connection between the profiles of series 40.

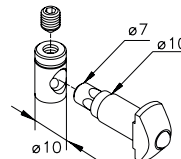
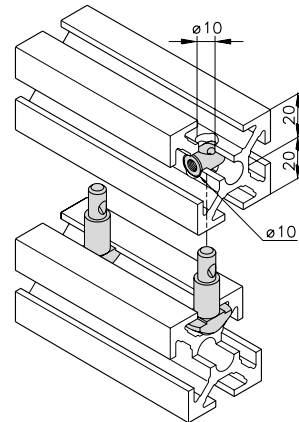
The pressure piece (ball with spring) locks the tension plug in the groove, which makes the vertical installation very easy. In order to install the parallel tension plug, an additional hole (offset by 90°) must be drilled. A second tension plug prevents torsion. As a rule of thumb, a tension plug should be installed every 1,000 mm. The butt tension plug ensures the connection of two profiles while all grooves remain accessible.



**Butt tension plug series 40 (normal+light) B51.03.043**



**Butt tension plug series 40 (extra light) B51.03.044**



**Parallel Connector series 40 B51.03.042**

(Drill  $\varnothing 10$  mm through hole)



**Maschinenbau Kitz GmbH**  
**Headquarters of the**  
**mk Technology Group**

Glockenstraße 84  
53844 Troisdorf  
Germany

Phone +49 228 4598-0  
Fax +49 228 453145

[www.mk-group.com](http://www.mk-group.com)  
[info@mk-group.com](mailto:info@mk-group.com)