

Turntables



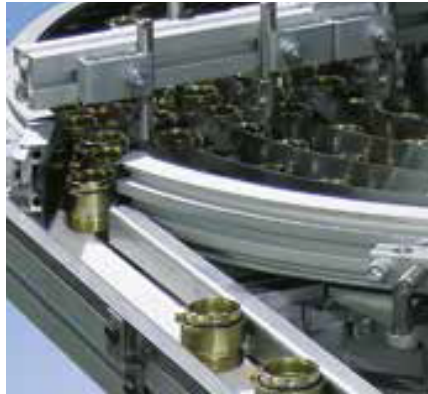
Contents turntables



Turntables

DTZ-P 2040

258

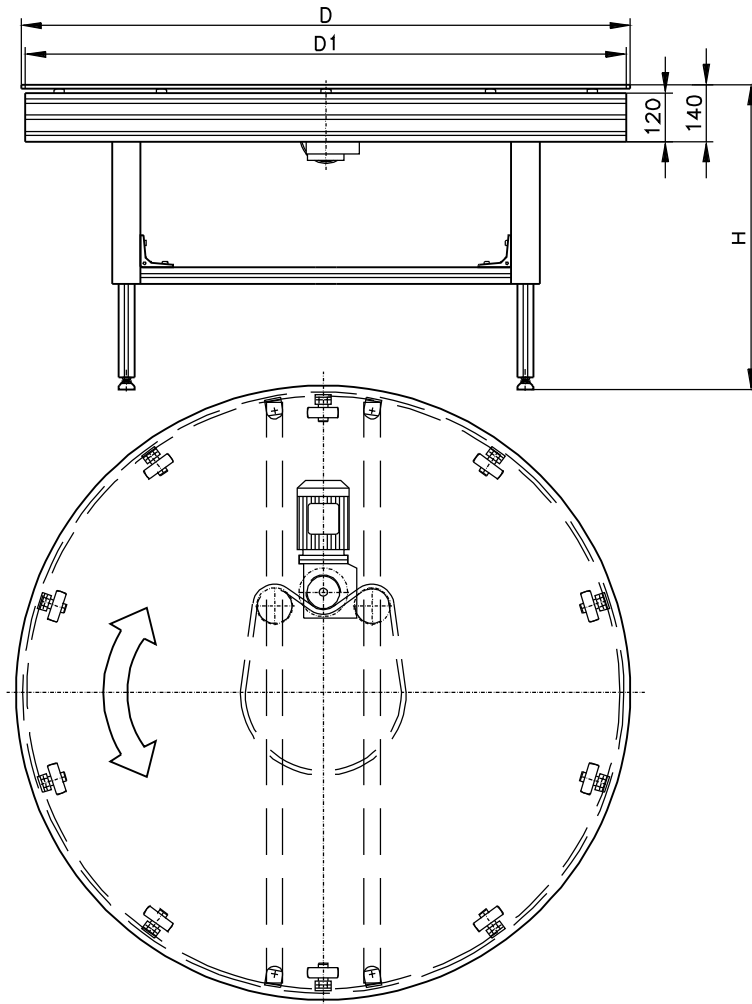


Application examples 260

DTZ-P 2040

Turntable with timing belt driven

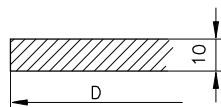
B12.01.001



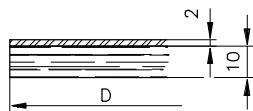
	Dimensions – technical information	Notes
∅ Turntable	D1 = 750, 1000, 1250, 1500 mm	others on request
∅ Surface	Dmin = D1-30, Dmax = D1+100	
Surface plate		see page 259
Drive design	timing belt	specials on request
v const (rev/min)	1 - 8 rev/min	others on request
Side rails		on request
Height H	H = 500 - 1500 mm	others on request

Surface plates

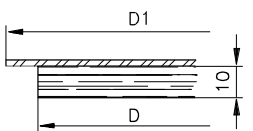
The following surface plates are our standards. Specials are possible on request.



Option 1.1
Laminated surface



Option 1.2
Laminated surface with SS cover

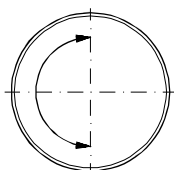


Option 1.3
Laminated surface with overhanging SS cover (for smaller products)

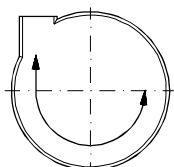
Construction, product flow

The following examples are standard configurations which can be combined. All constructions are available in clock- or counterclockwise.

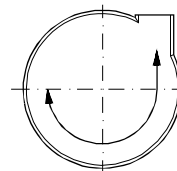
When designing diverters, the product weight and shape is critical to successful performance. The actual details of these diverters are therefore designed specifically to each customer's application. Because of our experience in the areas of material handling and conveying, mk can refer to numerous solutions offered in the past. Control integrated diverters are, therefore, also possible.



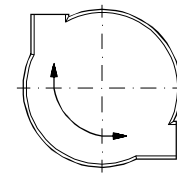
Construction A



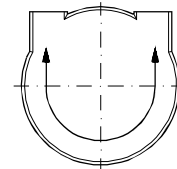
Construction B
chute left



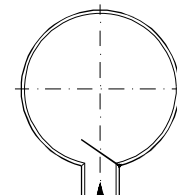
Construction C
chute right



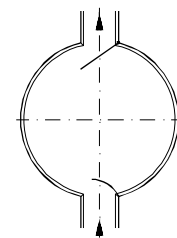
Construction D
chutes 90°



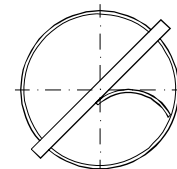
Construction E
chutes 180°



Construction F
chutes middle



Construction G
chutes 2 x middle, with diverters



Construction H
adjustable diverter

Order example

DTZ-P 2040 construction C

D1 = 1000 mm

D = 1075 mm

H = 800 mm

Surface option 1.1

v = 2 rev/min clockwise

Turntables

Application examples



**Turntable
"light" with
timing belt drive**



**Turntable "light" with timing belt drive,
including belt conveyor, together can be electrically
adjusted in height via a telescoping pillar**



**Turntable "light" with timing belt drive (ø 2000 mm),
applications in the pharmaceutical industry**



DTZ-P 2040 swivel table with timing belt drive



Turntable with direct drive, perimeter stainless steel plate and leader gage plate in the feed area



Turntable with friction drive



Turntable with direct drive, perimeter stainless steel plate and single-strand discharge